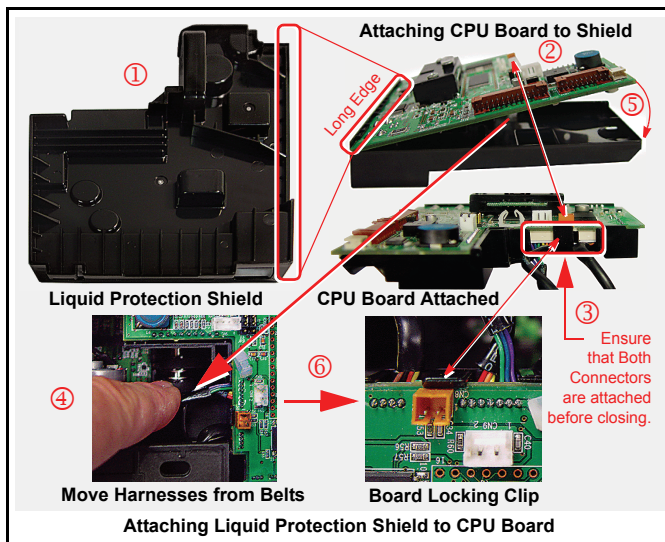


www.jcmglobal.com

The JCM Global Website provides the tools required to service all of our products. This includes a Software information database containing DIP Switch information, Customer Notifications, Product Manuals, Diagnostic Applications and more.

Parts are Parts



Part No. 900-200205R

Description: UBA CPU Liquid Protection Shield

Usage: The Liquid Protection Shield ① is designed to easily retrofit the CPU Board ② of UBA Units operating in areas prone to risk of liquid spills or intrusion contact. The Cover prevents liquids from reaching the CPU Board and channels it out of the UBA Validator. This Shield became standard on JCM Units manufactured after August 2008.

Note: When installing the Shield ① be sure to attach the two (2) Lower Board Connectors ③ first, and route any interfering Harnesses away from the Belts ④ before closing ⑤ the CPU Board ② onto the Locking Clip ⑥.

Latest USA JCM Software Listing

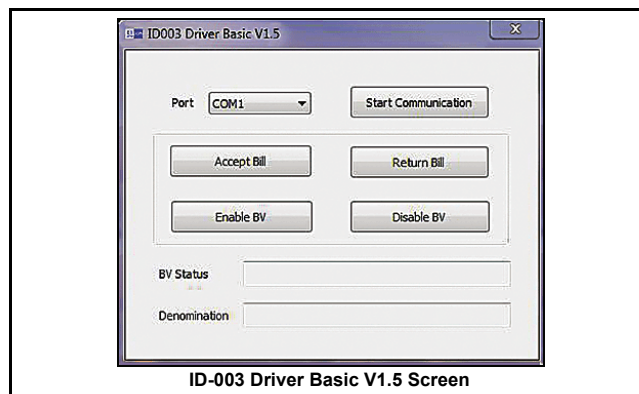
UNIT	ID	Version*	CRC or Check Sum
UBA-10/11-SS	ID-003	V1.92-20	FC37
UBA-10/11-SS	ID-024	V1.77-17	719A
UBA-14/24-SS/SU	ID-003	V-1.71-16	CRC=7B3F
UBA-14/24-SS/SU	ID-0G8	V-1.76-63	CRC=487D
UBA-14-SS & UBA-24-SS/SU	ID-024	V1.92-27	CRC=EA7A
UBA-14-SS & UBA-24-SS/SU	ID-028	V1.76-13	CRC=650A
WBA-12/13-SS	ID-003	V-3.76-32i*	CA99
WBA-12/13-SS	ID-044C	V-3.75-05i*	FE10
WBA-12/13-SS	ID-044	V-3.75-05i*	D716
WBA-12/13-SS	ID-024	V-3.75-34	CD3B
DBV-200-B0/B1	ID-022/023	V-2.61-04-03	79E0
DBV-200-A2/A3	ID-044P/045P	V-2.70-05	AA03
DBV-200-A2/A3	ID-044WP/045WP	V-2.61-05	19F7
DBV-200-B4/B5	ID-024	V-2.70-11	6C31
DBV-200-B4/B5	ID-003 (Head Only)	V-2.61-02	9E55

* an "i" suffix indicates Intelligent Cash Box option.

The list of JCM Banknote Validator Software provided herein notifies customers of the latest versions developed. However, the listing does not identify versions approved by gaming jurisdictional authorities for actual use. Customers should always consult the JCM's Parts Sales Departments concerning approved versions for use in their specific jurisdictions intended for operation.

Technical Notes

The new ID-003 Basic Driver is now Available. The Version 1.5 ID-003 Basic Driver now allows selection of the desired PC Com Port when testing communications between a Host Machine and a JCM Validator.



Save Time and Labor with JCM's Intelligent Cash Box System

The ICB® (Intelligent Cash Box) system is a unique cash management system that allows the operator to track a Cash Box and its contents through the entire cash process. The ICB system eliminates the need for dedicating Cash Boxes to specific machines, or putting barcode identification labels on the Cash Boxes. The Cash Boxes are tracked electronically eliminating most variance issues, and with the custom reports provided to each department, accuracy and efficiency is greatly improved.





FREE REGIONAL USA TRAINING

Give your technicians the tools they need to keep your customers happy and your equipment running at peak efficiency.

For the local and regional training schedule visit:

<http://www.jcmglobal.com/en/support/training/calendar.aspx>

Technical Bulletin 201005 May 2010

Technical Tips

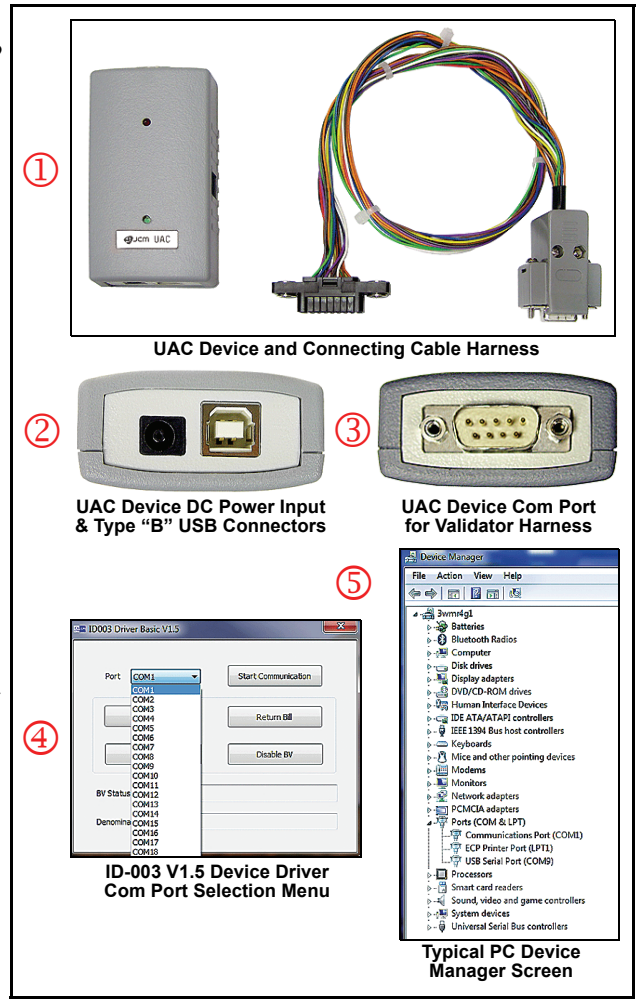
Question: Is there a Basic Driver Program for the UAC Device?

Answer: The UAC Device ① is a new Interface Assembly for testing JCM Units using a USB Port instead of a PC serial Port connection.

Previously, the PC Serial Ports had to re-numbered on the Computer because most Basic Drivers were written for a specific Serial Port connection, and most Computers usually numbered their communications Serial Port as "Com 1".

With modern day Computers moving toward the exclusive use of USB connections ②, and moving away from, or actually eliminating, the Standard 9-pin D Serial Port ③, JCM has created the UAC Device to accommodate Validator testing using the PCs USB Ports.

The newest Version 1.5 Basic Driver allows the User to choose any existing Com Port ④ still available on the Computer. To find the Com Port assignment the UAC Device is using, connect it to the Computer and look in the "Device Manager" Section ⑤ of the PCs Control Panel to identify its auto assignment location.



The following Table lists the UAC Harnesses that must be ordered separately for each type of Validator requiring testing.

Kit Number	Harness P/N	Validator Type
701-100103R	302-200409R	UBA/WBA 12/13
701-100104	302-200211R	Taiko PUB-7/11 ID-003
	302-200210R	Taiko PUB-7/11 ID-0E3 ccTalk
701-100105R	302-200406R	EB-200
	302-200404R	EBA-1x
	302-200405R	EBA-03
	302-200407R	EBA-3x

UAC Device, I/O Ports and Screen Displays

JCM TECHNICAL SUPPORT CONTACTS		
Headquarters (Japan)		
Sales and Service	81-6-6703-8405	hq-jp@jcmglobal.com
Europe, Africa, Russia, Middle East		
Sales and Service	49-211-530645-0	hq-eu@jcmglobal.com
Australia, Oceania		
Sales and Service	61-2 9648 0811	ipayne@jcmglobal.com
Southeast Asia		
Sales and Service	853 28 72 2648	jim.teng@jcmglobal.com
North/South America/Canada/Caribbean		
Toll Free Product Support	(800) 683-7248 or (702) 651-0000	techsupport@jcmglobal.com
After Hours America's Support		
JCM American prides itself in offering the best Customer Service in the industry. We prove this by offering a 24 hour hotline, where Technical Support Personnel can be reached at any time, 7 days a week. To reach our 24/7 after hour's hotline, just follow these three easy steps: 1.) Call JCM American at (800) 683-7248. 2.) Select "Option 5" and wait for the call to be transferred to the JCM after hour's Technical Support line. 3.) Speak with a certified JCM support technician about your situation.		

JCM is a registered trademark of JCM American Corporation. All other product names mentioned herein may be registered trademarks or trademarks of their respective companies. Furthermore, TM and ® are not mentioned in each case in this publication.